



**DGL Consulting Engineers, LLC**

*Experience that matters! • Founded 1926*

April 26, 2007

T/A Napoleon  
P.O. Box 268  
1270 Independence Drive  
Napoleon, OH 43545

Attn: Mr. Jack Grewal  
President

Re: US-24 Access to/from CR-12

Dear Mr. Grewal:

This letter is written to summarize the work that our firm has performed on your behalf relative to US-24 Access from CR-12. Please recognize that access alternatives presented within this letter have been developed utilizing our knowledge of transportation/traffic engineering and understanding of governing design manuals. Since limited design and no traffic analysis nor field survey has been completed, the alternatives presented should be recognized as illustrations that could be subject to preliminary engineering revision.

Your request of us was to evaluate the existing US-24 corridor between Industrial Drive and CR-12 and to explore alternatives to provide access from CR-12. Upon our initial evaluation, it became clear that a traditional "diamond" interchange at CR-12 would not be feasible due to the number of topographic interferences and conflict with the adjacent interchange at Industrial Drive. Based on this conclusion, DGL focused on alternatives that utilized a collector/distributor road concept to "connect" the two crossroads together.

Three basic alternatives were developed with three options presented at Industrial Drive for alternative nos. 1 and 2. The alternatives were as follows:

1. Alternative No. 1 - Provides an entrance ramp to eastbound US-24 from the existing Independence Drive (east of CR-12) and an exit ramp from westbound US-24 to CR-12.
2. Alternative No. 2 - Provides the same access to US-24 as Alternative No. 1, however both ramps intersect with CR-12; utilization of the side road is not required.
3. Alternative No. 3 - Provides full access at CR-12.

Upon evaluation it became immediately apparent that Alternative No. 3 would have a significant negative impact to the area through numerous property acquisitions, therefore this alternative was deemed not feasible.



## DGL Consulting Engineers, LLC

*Experience that matters! • Founded 1926*

Alternate Nos. 1 and 2 were developed to utilize a collector/distributor road concept. Both of these alternatives require the adjacent local roads (Independence and American) to function as collector/distributor roads, similar to how they function currently. It should be understood that by definition a **collector/distributor road is not a local road**, therefore the implementation of either of these alternatives would require ODOT and FHWA to compromise standards that are applicable to highway interchanges that use this design method. We further acknowledge that although not the preferred design methodology, there are roadway applications similar to these two alternatives that are functioning at adequate service levels.

Following the meeting that was held with Mr. David Dysard, ODOT D2 Deputy Director, on April 10, the introduction of collector/distributor roads within the US-24 corridor for Alternative Nos. 1 and 2 (similar to Alternative No. 3) was briefly evaluated. Although constructing a C/D road within the corridor would appear to satisfy the design standards that Mr. Dysard discussed, DGL can not recommend that this be pursued. In doing so, no meaningful additional functionality is gained within the area and significant structural work or replacements at the two overhead bridges is likely.

We appreciate the opportunity to be of service to you and wish you well with upcoming dialogue on the US-24 Access to/from CR-12. Please contact the undersigned should further information be required.

Sincerely,  
DGL Consulting Engineers, LLC

A handwritten signature in blue ink, appearing to read 'Stephen M. Way'.

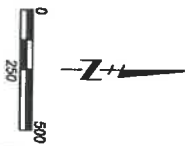
Stephen M. Way, P.E.  
Principal, Managing Director

Enclosures

cc: D. Dysard, ODOT District 2  
C. Lulfs, City of Napoleon  
R. Germann, Henry County



Pavement Removal

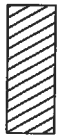
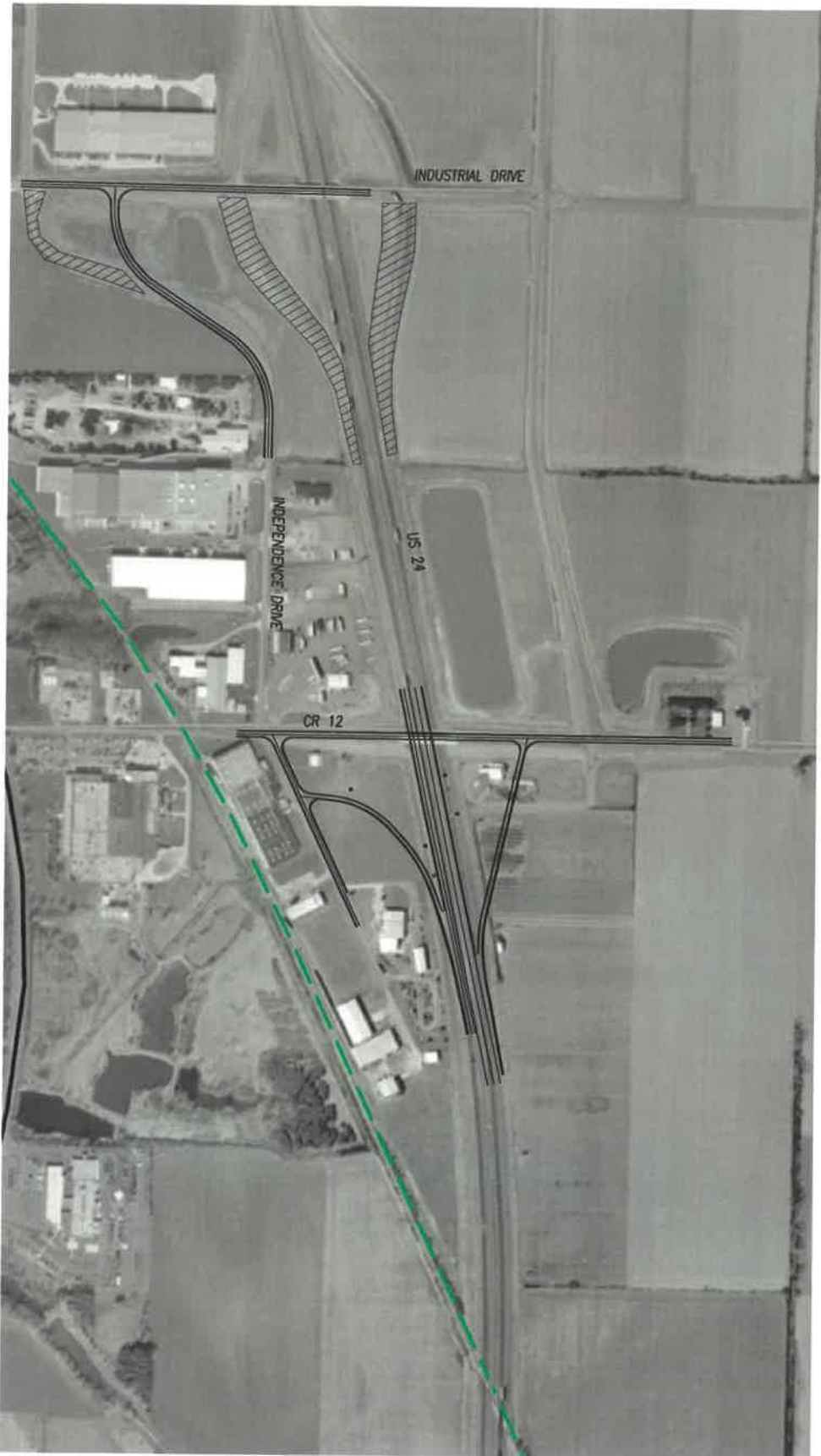


**INTERCHANGE - ALTERNATE 1A**

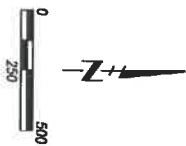


**DGI Consulting Engineers, LLC**  
 3455 Bourfield Blvd. - Ste. E  
 Alliance, Ohio 43317  
 Phone (419) 535-1015 Fax (419) 535-1429  
 www.dgi-hill.com

Civil Structural Transportation Municipal Engineering  
 Survey Site Development Traffic Impact Studies



Pavement Removal



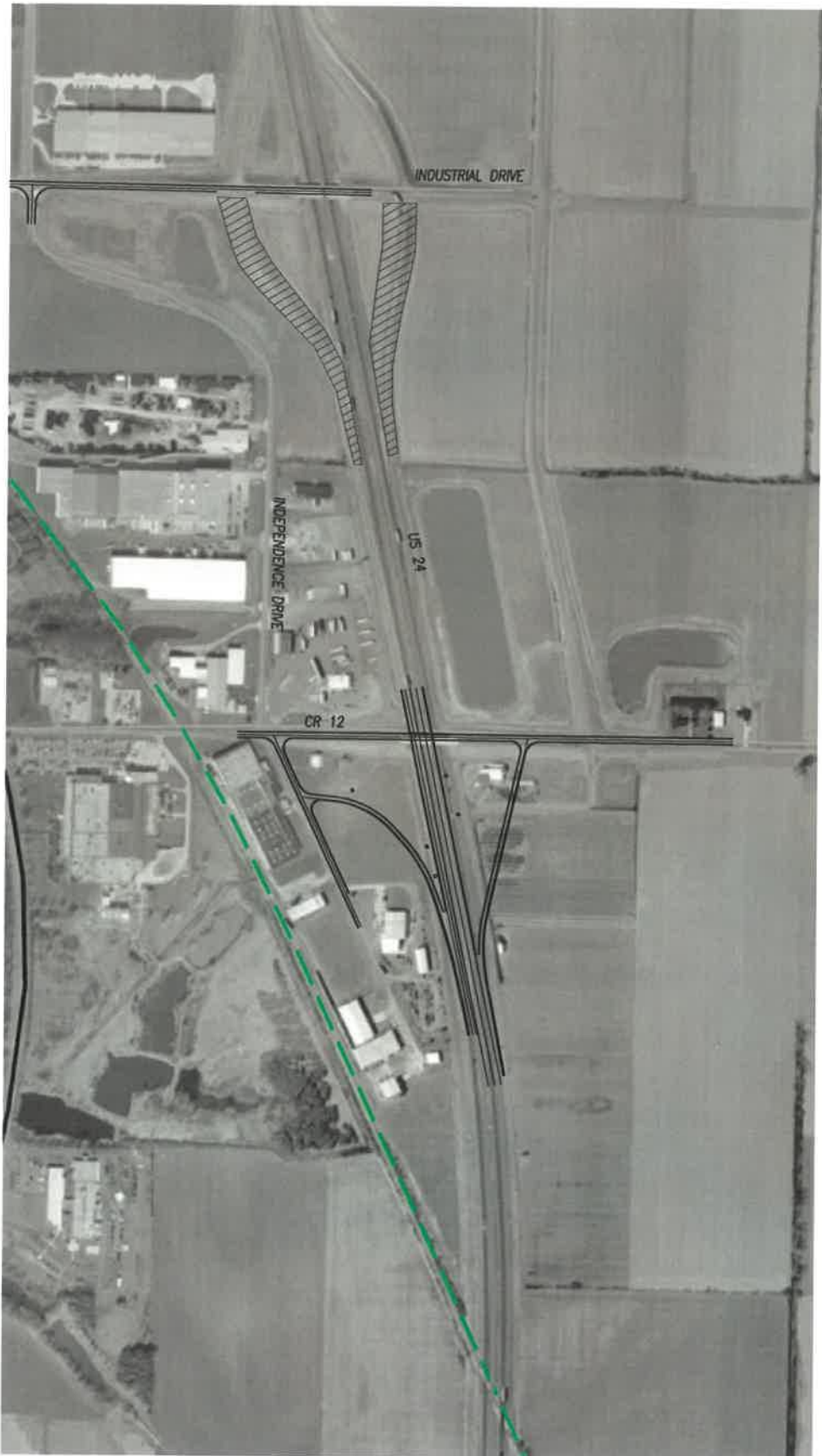
**INTERCHANGE - ALTERNATE 1B**



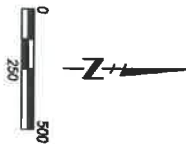
**DGI Consulting Engineers, LLC**  
 3455 Briarfield Blvd. - Ste. E  
 Murrree Ohio 43337  
 Phone (419) 535-1015 Fax (419) 535-1429  
 www.dgi-llc.com

Civil Structural Transportation Municipal Engineering  
 Survey Site Development Traffic Impact Studies





Pavement Removal

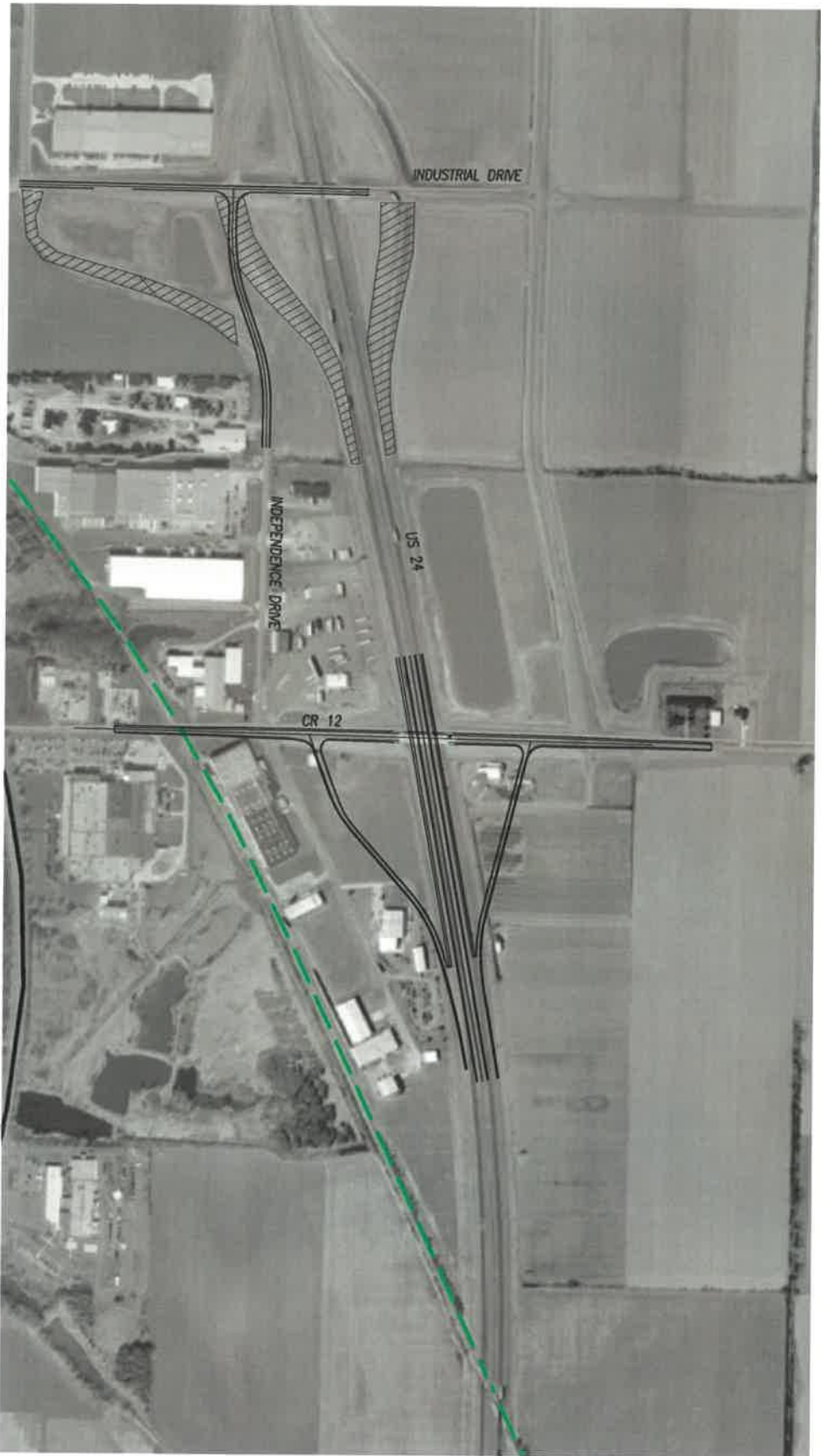


**INTERCHANGE - ALTERNATE 1C**



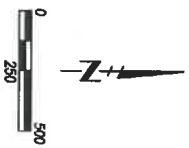
**DGL Consulting Engineers, LLC**  
 3455 Briarfield Blvd. - Ste. E  
 Maumee Ohio 43537  
 Phone (419) 535-1015 Fax (419) 535-1429  
 www.dgl-hd.com

Civil Structural Transportation Municipal Engineering  
 Survey Site Development Traffic Impact Studies



Pavement Removal

NOTE: ALTERNATES AT INDUSTRIAL DRIVE AND INDEPENDENCE DRIVE SHOWN WITH ALTERNATES 1B AND 1C ALSO Viable.

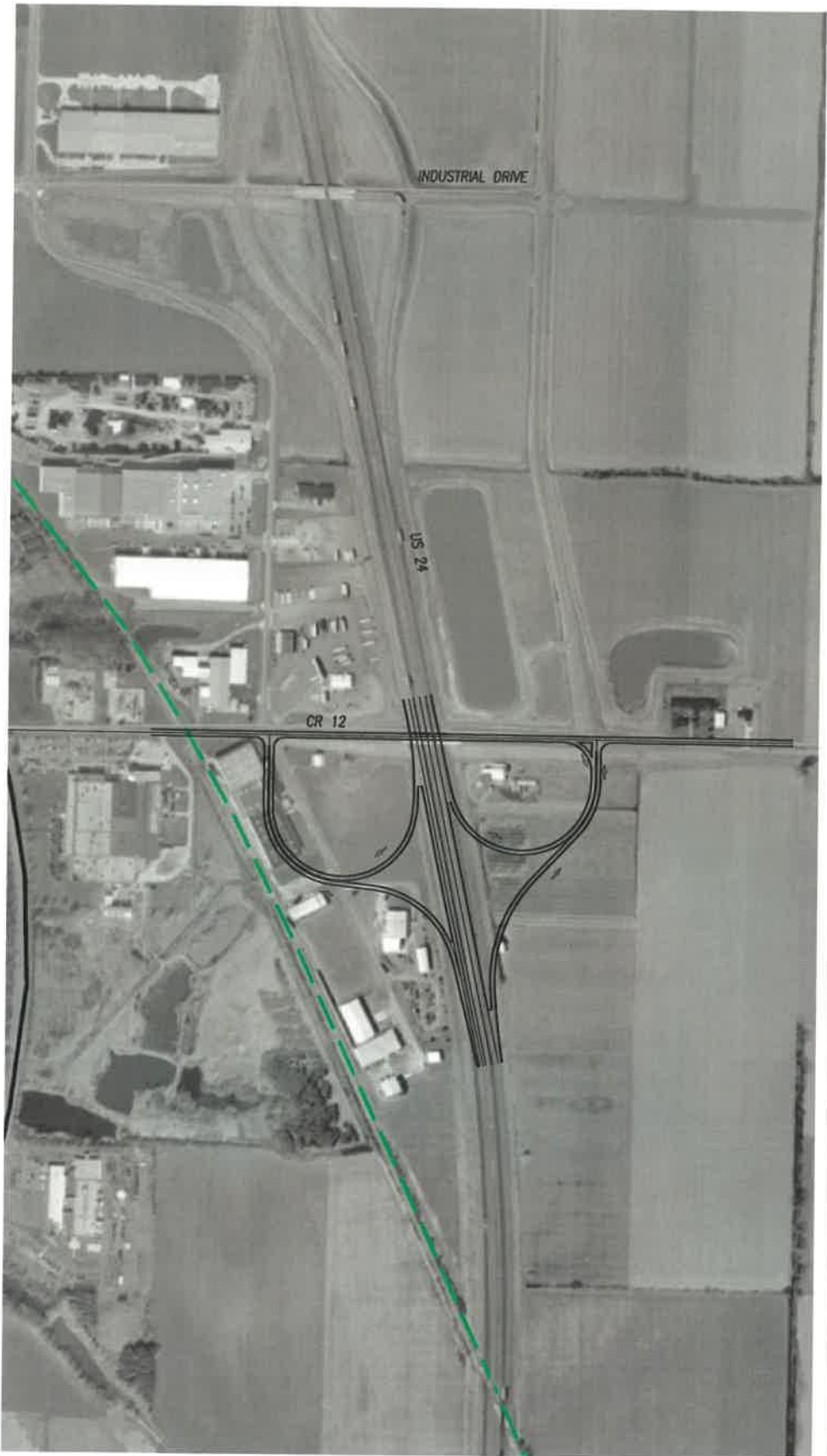


**INTERCHANGE - ALTERNATE 2A**



**DGI Consulting Engineers, LLC**  
 3455 Brainerd Blvd. - Ste. E  
 Maumee Ohio 43537  
 Phone (419) 535-1015 Fax (419) 535-1429  
 www.dgi-hd.com

Civil Structural Transportation Municipal Engineering  
 Survey Site Development Traffic Impact Studies



**INTERCHANGE - ALTERNATE 3**



**DCA Consulting Engineers, LLC**  
 3455 Bedford Blvd., Ste. E  
 Bedford, Ohio 43207  
 Phone (419) 533-1429  
 Fax (419) 533-1429  
 www.dca-engineers.com

Civil, Structural, Transportation, Municipal Engineering  
 Survey, Site Development, Traffic Impact Studies